



Waterson Street, E2 8HH  
Asking Price £599,950

**coopers**  
OF LONDON EST. 1986

# Waterson Street, E2

- Video Tour
- 978 SQFT
- Walking distance to the City
- Three double bedrooms
- Large open plan reception/kitchen
- Close to Shoreditch High Street
- Secure development

**Large purpose built three-bedroom apartment in a modern development just off Shoreditch High Street.**

**Set on the first floor, the property spans 978sq ft and comprises three double bedrooms, 2 bathrooms (one en-suite) and an open plan kitchen / reception area.**

**Perfectly located for the bars and restaurants of Shoreditch, the city is within walking distance as are Hoxton, Old Street and Shoreditch High Street stations.**

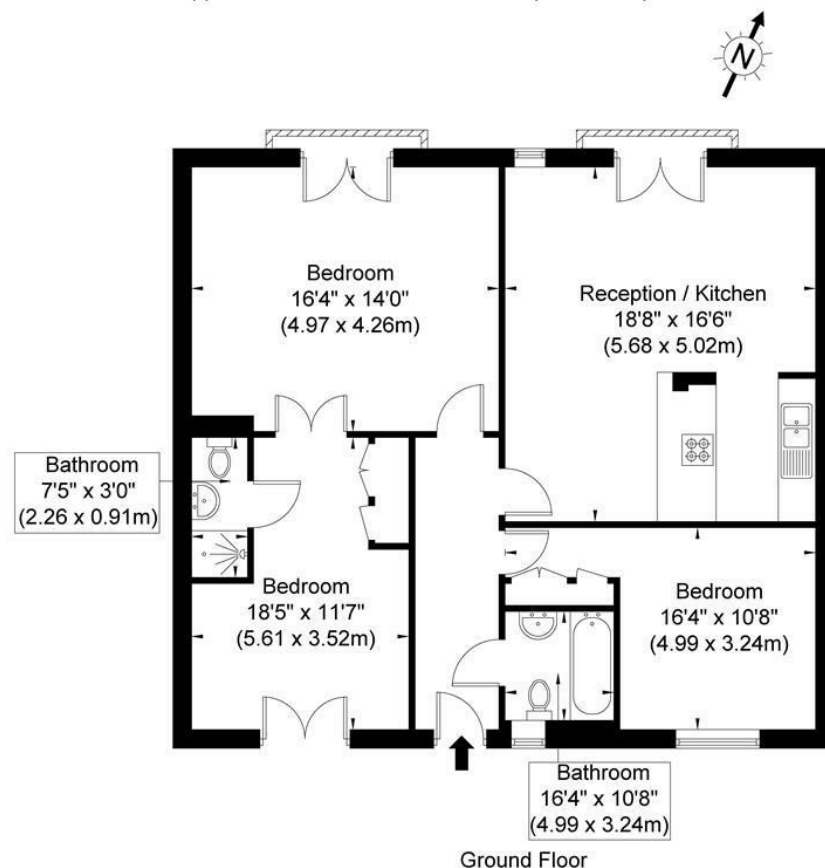






# Atlantic House, Waterson Street, London, E2 8HH

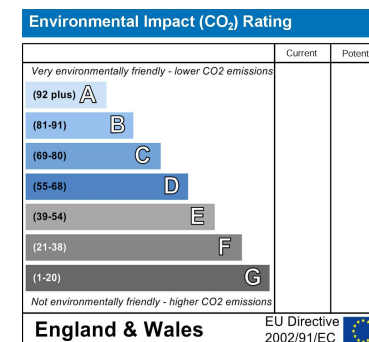
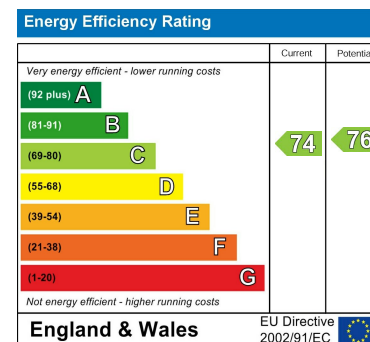
Approx. Gross Internal Area = 978 sq ft / 90.9 sq m



Ref

Copyright THEBLÉUPLAN

Disclaimer : Floor plan measurements are approximate and are for illustrative purposes only. While we do not doubt the floor plan accuracy and completeness, you or your advisors should conduct a careful, independent investigation of the property in respect of monetary valuation.



## Viewing

Strictly by appointment with:  
Coopers of London, 22 Cleveland Street,  
Fitzrovia, London W1T 4JB  
info@coopersonlondon.co.uk

**0207 580 9658**

These particulars, whilst believed to be accurate are set out as a general outline only for guidance and do not constitute any part of an offer or contract. Intending purchasers should not rely on them as statements or representation of fact, but must satisfy themselves by inspection or otherwise as to their accuracy. No person in this firm's employment has the authority to make or give any representation or warranty in respect of the property.